

## GRADUATES' SCHEDULE

2:30 p.m.  
Arrival/Check-In outside the Fitness Center, Jenny Craig Pavilion, University of San Diego

---

3:40 p.m.  
Mandatory Graduation Rehearsal, Line-up, and procession in to the arena

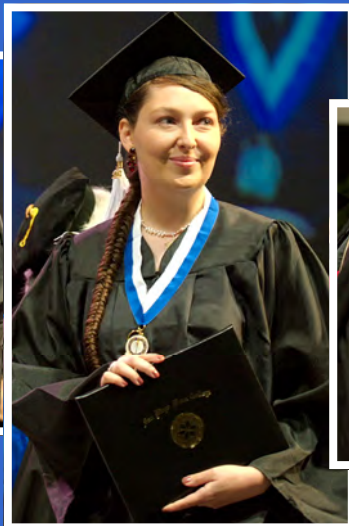
---

4:00 p.m.  
Commencement Ceremony begins

---

5:30 p.m.  
Ceremony concludes — President's Reception in Eagan Plaza

Please refer to additional graduate information enclosed for important information.



## GUESTS' SCHEDULE

3:00 p.m.  
Doors to the Arena will open and guest seating will begin

---

Guests needing special seating should contact one of the commencement ushers immediately upon arrival.

Guests will be seated on a first-come basis. Seats may not be saved for others.

---

4:00 p.m.  
Commencement Ceremony begins

---

5:30 p.m.  
President's Reception in Eagan Plaza

We Can't Wait



To Celebrate!

COMMENCEMENT  
CEREMONY  
May 16, 2009

Schedule & Information  
for  
Graduates and their Guests

*Mesa*  
SAN DIEGO MESA COLLEGE

## Information for Graduating Students

If you have not yet registered to participate in the Graduation Ceremony, please refer to your invitation or contact the Evaluations Office at (619) 388-2680 for registration instructions.

**Graduates must be in proper academic regalia (cap, gown and tassel) to participate in the ceremony.** Please wear your tassel on the right side of your cap until you are instructed to move it to the other side.

If you have a physical disability for which you need assistance to participate in the ceremony, and you have not already done so, please contact the Student Affairs Office at (619) 388-2699 to make the appropriate arrangements.

There are no facilities for securing purses, backpacks or other valuables.

No childcare is available.

Please turn your cell phone off and leave balloons, floral bouquets, etc. with your guests during the ceremony.

A professional photographer will take pictures of every graduate as degrees are conferred. Information about ordering photographs will be given to you during the rehearsal.

Diplomas will be mailed to you only after all graduation requirements have been verified and all financial holds have been cleared. Please be sure the Evaluations Office (619) 388-2680, has your correct address on file.

## Information for Everyone

The Mesa College Commencement Ceremony is open to the family and friends of Mesa Graduates. No tickets are required.

The **Jenny Craig Pavilion** is located on the campus of the University of San Diego (USD)

5998 Alcalá Park  
San Diego, CA 92110

Directions to USD can be found on the Mesa College Commencement Website:

[www.sdmesa.edu/commencement](http://www.sdmesa.edu/commencement)

Parking is free in the USD Mission Parking Structure. At the main entrance to the USD campus, turn right at the stop sign and follow the road to the bottom of the hill. A tram will be available to take visitors from the parking structure to Jenny Craig Pavilion.

Those needing disabled parking will be directed by signs and parking staff.

Bus Route 44 stops at the main entrance to USD.

American Sign Language interpreters will be available at the ceremony.

All persons entering the facility are subject to search.