

CAREER SERVICES STRATEGIC PLAN @ MESA COLLEGE

Reimagining Career Services Across Our Campus

President's Cabinet | March 5, 2024

Presented by: **Alexander Berry** (Associate Dean, Career Technical Education), **Raquel Sojourner Worlds** (Career Coordinator/Counselor), and **Olivia Picolla** (Supervisor)

CAREER SERVICES IMPACT

Help students create a unique career & life vision by understanding their WHY.

Support students in being intentional with their experiences inside & outside the classroom through exploration of interests, development of skills, and preparation for the workforce.

STUDENT SERVICES
SAN DIEGO MESA COLLEGE
 Career Center

INSTRUCTIONAL SERVICES
SAN DIEGO MESA COLLEGE
 Work-Based Learning

= A Liveable Wage

SAVE THE DATE!

DISTRICT-WIDE CAREER FAIR SPRING 2024

JOB, INTERNSHIPS, NETWORKING, AND MORE!

Thur. March 21, 2024

10 AM - 2 PM

San Diego Mesa College (Mesa Commons)

STUDENTS REGISTER HERE:
<https://bit.ly/SP24Students>

ALL SDCCD STUDENTS & ALUMNI ARE INVITED!

Questions? Contact the Mesa College Career Center:
 For disability accommodations, please contact mesacareer@sdccd.edu at least 7 days prior to the event.

Logos for San Diego City College, San Diego Mesa College, San Diego Miramar College, and San Diego College of Continuing Education.

VETERAN CAREER PANEL

TUESDAY, NOVEMBER 7TH
 11:35AM-12:15PM

VETERAN SUCCESS CENTER, K-103/104

LISTEN & LEARN FROM VETERANS WHO HAVE CREATED CAREER PATHWAYS IN DIVERSE INDUSTRY SECTORS!

ESTHER LAN
 MANAGEMENT ANALYST FOR THE CITY OF CARLSBAD
 MILITARY BRANCH: MARINE CORPS
 MESA ALUMNUS

TIM MURNS
 CHEF FOR HOTEL DEL CORONADO
 MILITARY BRANCH: US NAVY
 MESA ALUMNUS

TRACY ALLEN
 PRE-NEED CREMATION PLANNING ADVISOR
 MILITARY BRANCH: US NAVY

DUSTIN HAYES
 CEO OF RED, WHITE, & BADASS BREW
 MILITARY BRANCH: US NAVY

CINDY WEISE
 NAVY RESERVE OFFICER RECRUIT
 MILITARY BRANCH: US NAVY

LUNCH PROVIDED WHILE SUPPLIES LAST!

SAN DIEGO MESA COLLEGE | Career Center

SAN DIEGO MESA COLLEGE | Career Center

CAREER AMBASSADOR PROGRAM

RESUME & COVER LETTER WRITING | JOB SEARCHING | INTERVIEW PREPARATION

ABOUT CAP
 The Career Peer Ambassador Program (CAP) is a group of friendly student leaders dedicated to assist their fellow peers on all things career-related!

MEET THE TEAM!
 Jose Brooke Dorothy Kanika Ashley

SCHEDULE AN APPOINTMENT WITH CAP ON HANDSHAKE!
 Students can book an appointment with CAP on Handshake. Appointments are offered in-person, virtual on Handshake, and via email. Click [here](#) for instructions.

POST-APPOINTMENT FEEDBACK FROM MESA STUDENTS

"Came in with a little bit of knowledge of resumes and came out with confidence to write my own. They helped me with enthusiasm and awesome energy. Thank you, CAP!"

"They are very helpful and gave me more confidence to apply for jobs!"

"With CAP I learned a lot about how to communicate effectively with any employer!"

Find us at the Career Center, 3rd floor of the Student Services building!
 619-388-2777 | mesacareer@sdccd.edu | bit.ly/CAPSDMesa

PROFESSOR WENDY SMITH - WORK-BASED LEARNING PRESENT

SAN DIEGO MESA COLLEGE

ETHNOGRAPHER EXTRAVAGANZA

Save the Dates

Fall 2023 - Zoom & In-Person!

Tuesday, October 17th, 8:30 am - 9:30 am
Dr. Kristian Secor | San Diego Mesa College
 Associate Professor, Web Development
In Person - Room B-102

Tuesday, October 24th, 8 am - 9 am
Dr. Kristine Kilanski | University of California San Diego
 Director of Equity Research & Analytics
In Person - Room B-102

Wednesday, November 29th, 1 - 2pm
Dr. Cheryl D. Ching | University of Massachusetts Boston
 Assistant Professor, Leadership in Education
On Zoom - Register: <https://www.eventbrite.com/e/ethnographer-cheryl>

Dr. Cheryl D. Ching is an Assistant Professor in Leadership in Education at University of Massachusetts Boston. Her research focuses on the design and implementation of equity reforms, and tackles the question of how local actors, organizational conditions, and reform design shape the way equity is defined and implemented in practice. Dr. Ching examines these topics in both two- and four-year college settings, and pursues them methodically using case study methods.

Questions?
 Wendy Smith, wsmith@sdccd.edu | Kaitie Choi, kchoi@sdccd.edu
 Please email to request an ASL Interpreter 5 working days prior to the event.

SAN DIEGO MESA COLLEGE

Kapwa Learning Community - Work-Based Learning - APIA Committee - AANAPISI

Celebrating Women's History Month

Carreering While Asian Womxn Panel

MONDAY, MARCH 4, 2024 | 10:10 AM - 12:35 PM
 G-Building, Room 101

You are invited to learn from a panel of amazing Asian Pacific Islander American (APIA) women who have trailblazed in non-APIA fields. They will share their strategies for honoring their cultural roots and thriving in predominantly white industries. Everyone is welcome!

Cristine Patawan
 Student Moderator
 San Diego Mesa College

Lauren Williamson
 Student Moderator
 San Diego Mesa College

Dr. Catherine Sy Lull
 Pilot Chiropractor, Acupuncturist
 Lull Health Center

Lauren Balcells Garces
 Event Producer & Artist
 Social Artisty

Gwenette Nalani Purdy
 Registered Dental Hygienist
 Hula Instructor

Questions?
 Prof. Eba DeCams ebadecams@sdccd.edu | Prof. Patricia Guzman pguzman@sdccd.edu | Prof. Kaitie Choi kchoi@sdccd.edu
 To request an ASL Interpreter, please email 5 working days prior to the event.

SAN DIEGO MESA COLLEGE
 Work-Based Learning

MESA IMPACTship
 INTERNING WITH A PURPOSE

The Mesa Impactship Program (MIP) supports underserved students with exploring careers, developing professional skills, & compensating hands-on industry experiences through employment, internships, volunteering, or Directed Clinical Practice (DCP).

MAKE AN IMPACT & SUPPORT STUDENTS WORKFORCE PREPARATION

RECEIVE FUNDING TO PAY STUDENTS
 MIP Employer Partners pay Mesa students for workforce training activities. Students receive \$5000 one-time payment in hourly wages.

INCREASED WORKFORCE TRAINING
 Acquisition of internship & employment opportunities with access to underserved students & populations that face barriers to employment.

INDUSTRY PREPARATION
 MIP students engage in career development & reflection of learning with support from work supervisors, MIP Faculty & Technical Coordinators.

GET STUDENTS HIRED!
 Industry help students build professional skills & experiences to explore careers, gain confidence, & stand out to employers.

WWW.SDMESA.EDU/MESAIMPACTSHIP
 Questions or need help? Contact MIP at Mesaimpactship@sdccd.edu

MESA'S STRATEGIC PLAN FOR CAREER SERVICES

Develop and implement a **Career Services Strategic Plan** for San Diego Mesa College.

Phase I (year 1): Engage, **Assess**, Draft Plan

Phase II (years 2-4): Engage, Assess, **Implement** Plan

WHOSE ENGAGED

- STUDENTS
- YOU
- Career Services Team
- Institutional Effectiveness
- Mesa Community: Faculty, Classified Professionals, Administrators, and NANCE Employees
- Industry Partners
- San Diego Imperial Regional Consortium & West-Ed Consulting Group



TIMELINE & WHERE WE ARE AT

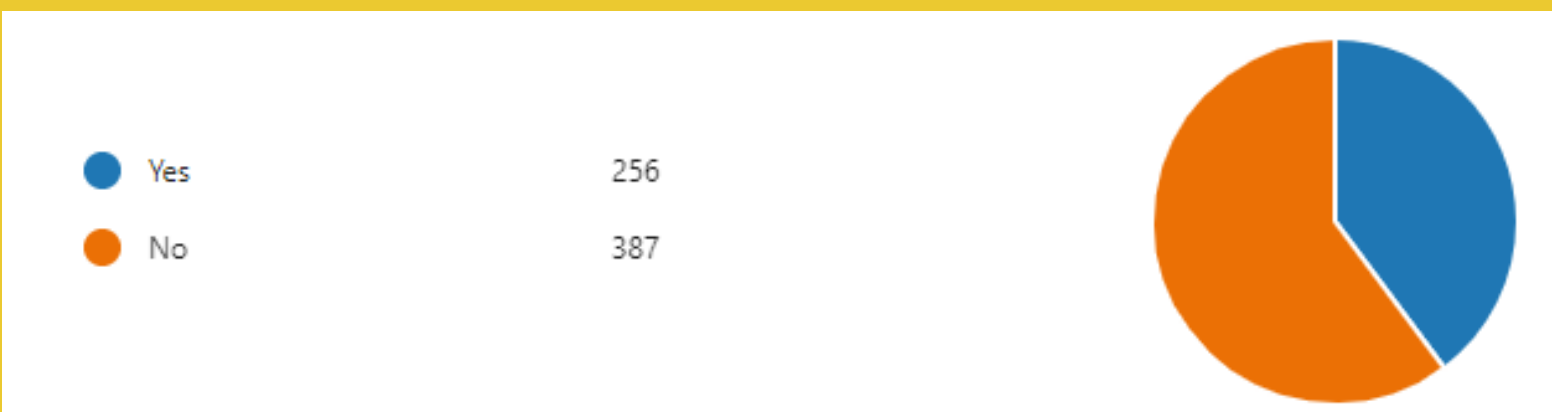
Year 1 (August 2023 - June 2024)

- NACE Assessment - **Completed**
- Collaborating with Institutional Effectiveness - Surveying: Students & Campus - **In-Progress**
- Student Focus Groups - **In-Progress**
- Presenting to Campus Stakeholders: Executive Team, Dean's Council, Administrators Meeting, Chair of Chairs, PCAB - **Ongoing**
- Alignment with Campus Efforts - Enrollment Management, Student Equity and Achievement Plan, Mesa 2030, Program Review, Academic & Career Pathways Workgroup - **Ongoing**
- Develop Career Services Strategic Plan by June 2024 - **In-Progress**

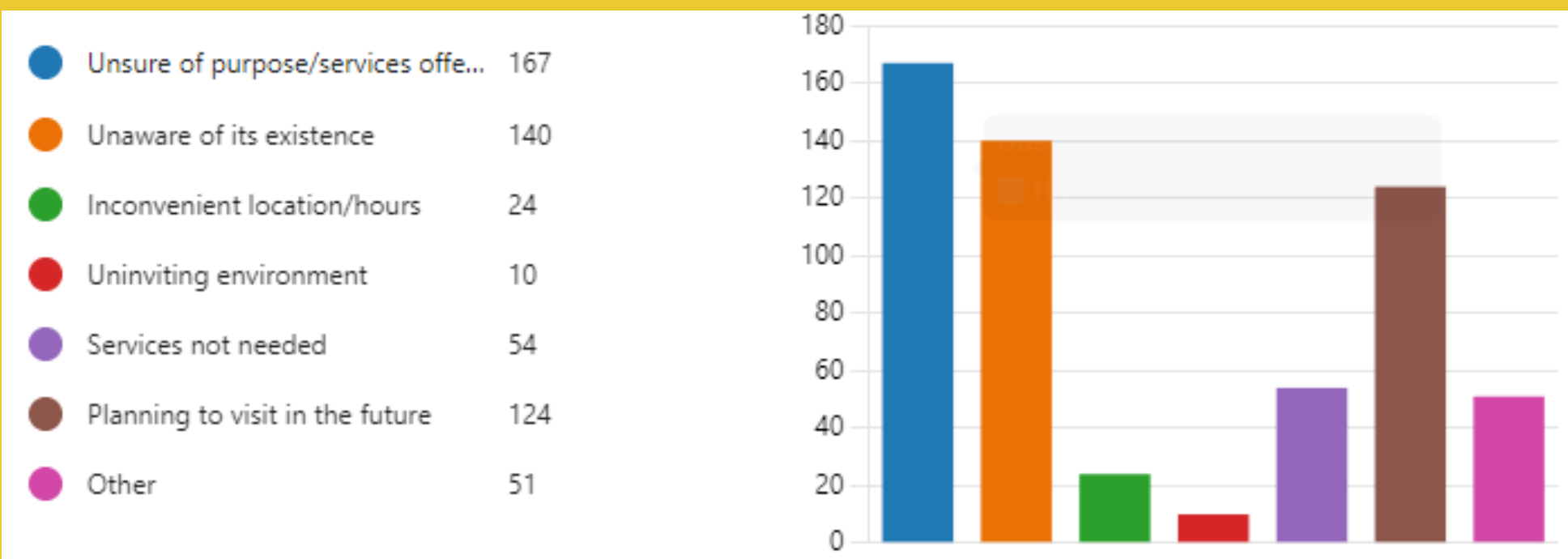
STUDENT SURVEY:

- Preliminary results
- 643 Responses as of 3/1/24

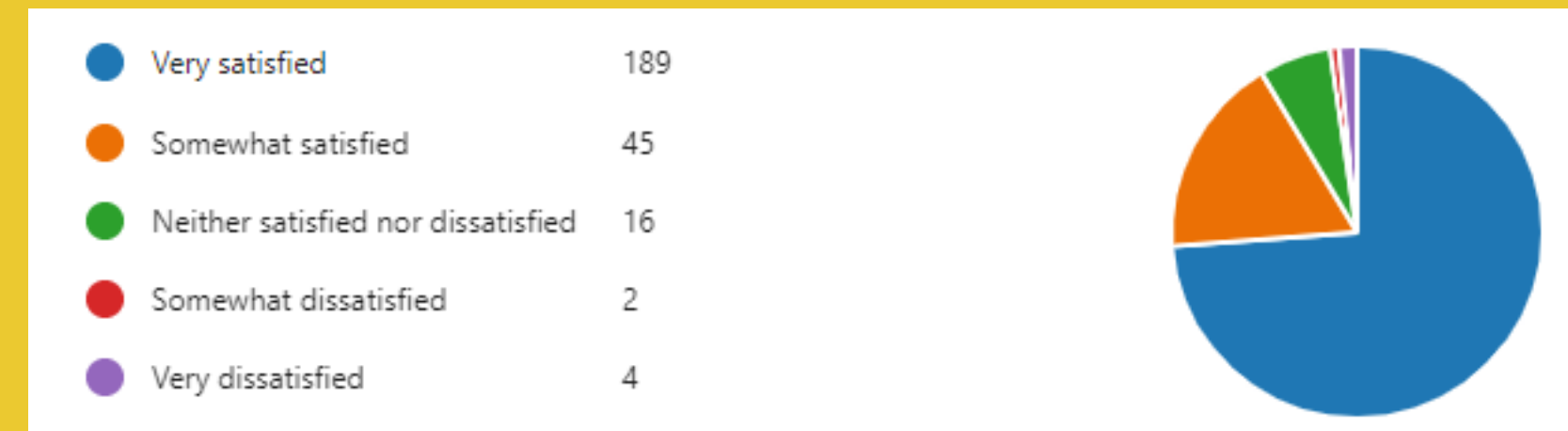
Have you utilized any resources from Career Services?



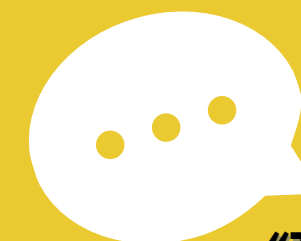
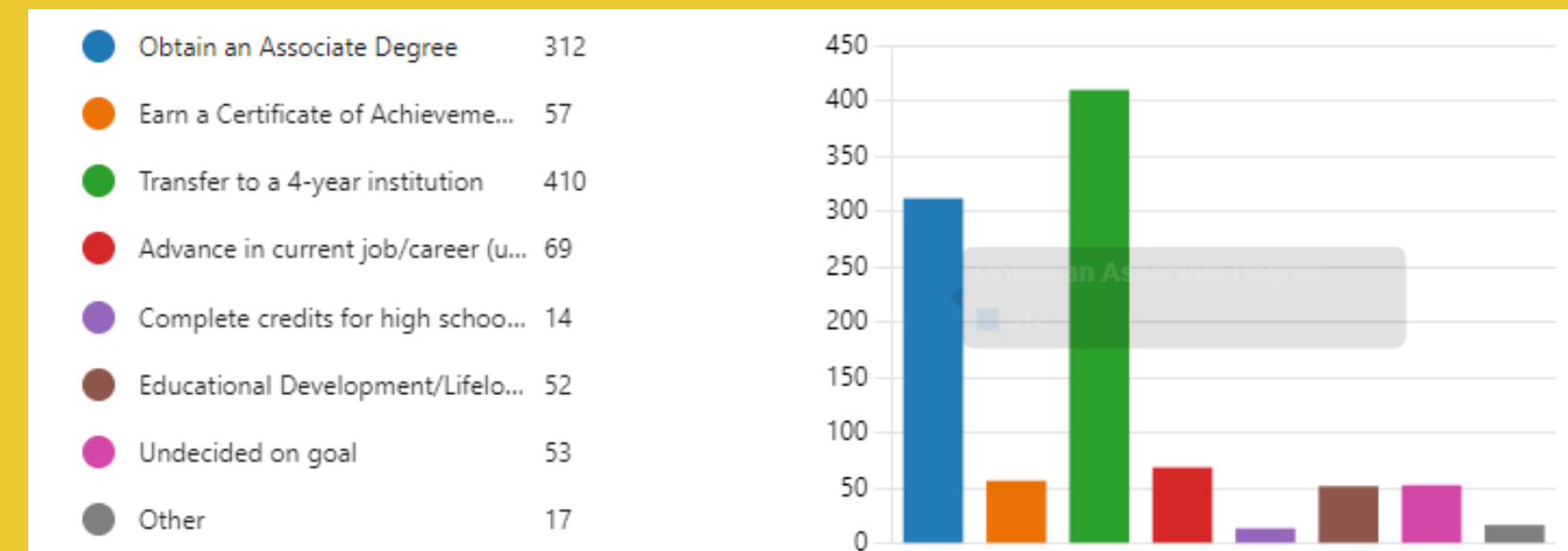
Please indicate why you have not utilized Career Services?



How satisfied were you with the career services provided?



What are your academic & career goals?



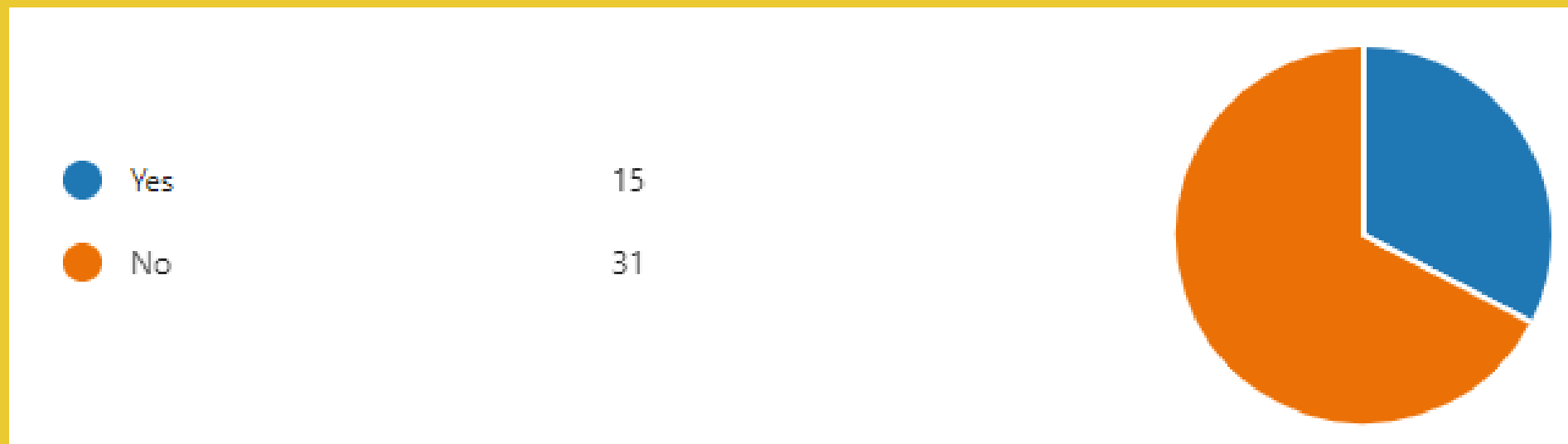
“What is the career service center?”

“Thanks for putting the MENA (Middle Eastern/North African) demographic in! I hope it helps identify underserved populations and clarify data in the future!”

CAMPUS SURVEY

- Preliminary results
- 46 Responses as of 3/1/24

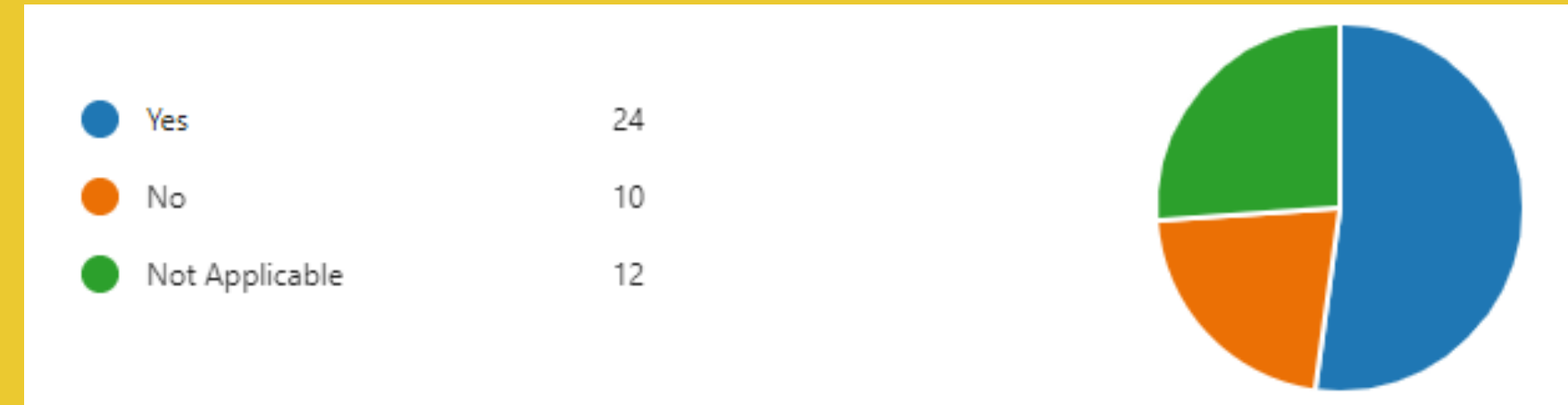
Have you collaborated with Career Services to provide a career activity inside or outside the classroom?



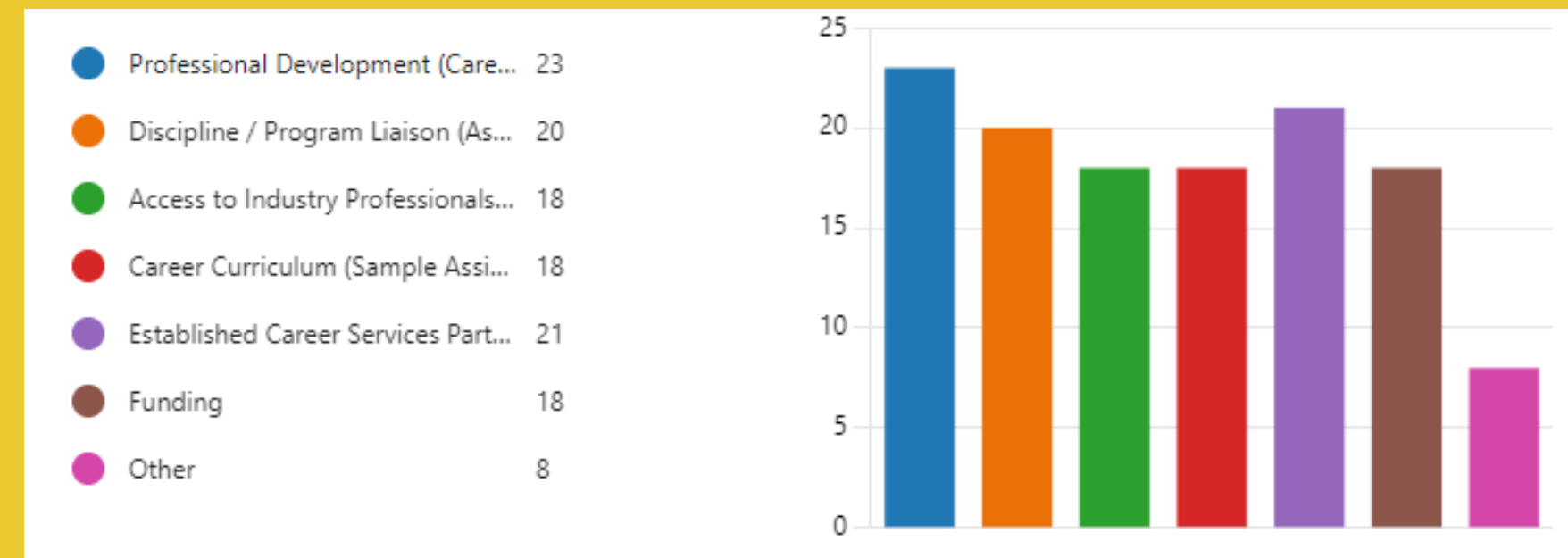
Have you referred any students to Career Services?



Are you embedding career components into your curriculum or department/program? (This question is applicable to both Instructional & Student Services)



What type of support would be needed to integrate career components into your discipline/program?



“More time and support for creating career assignments and handling all the paperwork. Funding to bring in speakers and organize tours. There are a lot of hurdles to jump through to do this work. It's also confusing to know who to go to, Career Center or WBL, who does what, and when they are available.”

ENVISIONING THE FUTURE OF CAREER SERVICES

What would it look like if we were the leading college of equity & excellence in respect to Career Services?

Provide your feedback here:



**THANK YOU FOR
SUPPORTING THIS
WORK!**

"The best time to plant a tree was 20 years ago. The second-best time is now."
— Chinese Proverb